

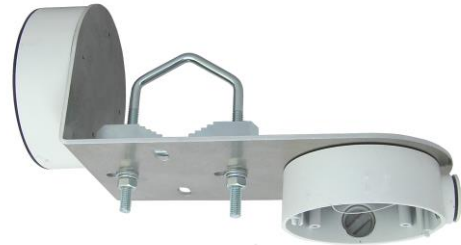
HIK120LE + Z25DV75 TWIN-C



professional bracket for mounting two cameras HIKVISION, DAHUA, TVT and other brands on a pipe or pole in a vertical or horizontal position



HIK120LE + Z25DV75 TWIN-C



HIK120LE + Z25DV75 TWIN-C + DS-1280ZJ-DM46 +DS-1260ZJ



bracket plate HIK120LE TWIN-C



Z85DV85



Z25DV75

technical parameters

material	AlMg3 thickness 3 mm
bracket (Fe galvanic zinc)	Z25DV75
weight	0,645kg
dimensions HIK120LE TWIN-C	120x130x249x3mm
openings	4x oval 20x9, 8xØ3,5mm
installation	tube from Ø 27 up to Ø 62mm



UH85

use: the bracket has integrated mounting holes for sockets DS-1280ZJ-DM46, DS-1260ZJ, DS-1280ZJ-DM18, DS-1280ZJ-PT3J (Hikvision)

note : HIK120LE + Z25DV75 TWIN-C can also be used for other mounting bases (cameras), the preparation of the necessary mounting holes (Ø3.5mm) is not difficult as the HIK120LE TWIN-C plate is made of aluminum alloy (AlMg3)

Oval holes allow the use of other mounts in addition to the Z25DV75, e.g. Z85DV85, for jackel mounting it is possible to use UH85

supplied accessories: 8 pcs of self-tapping screws DIN7516 M4x12

