

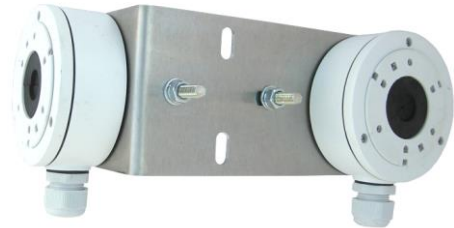
# HIK100LE + Z75DV75 TWIN-C



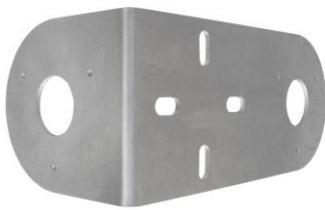
professional bracket for mounting two cameras HIKVISION, DAHUA, TVT and other brands on a pipe or pole in a vertical or horizontal position



HIK100LE + Z75DV75 TWIN-C



HIK100LE + Z75DV75 TWIN-C  
+ 2x DS-1280ZJ-XS



bracket plate HIK100LE TWIN-C



Z75DV75



UA70

## technical parameters

material	AlMg3 thickness 3 mm
bracket ( Fe galvanic zinc )	Z75DV75
weight	0,46kg
dimensions HIK100LE TWIN-C	99x226x109x3mm
openings	2x Ø34, 4x oval 20x9, 6xØ3,5mm
installation	tube from Ø 27 up to Ø 62mm



UH60

**use:** the bracket has integrated mounting holes for sockets DS-1280ZJ-XS (Hikvision), DH-PFA136 (Dahua), TD-YXH0104 (TVT)

**note:** HIK100LE + Z75DV75 TWIN-C can also be used for other mounting bases (cameras), the preparation of the necessary mounting holes (Ø3.5mm) is not difficult as the HIK100LE TWIN-C plate is made of aluminum alloy (AlMg3)

Oval holes allow the use of Z75DV75, Z85DV85, UH60 or UA70 (spacing 60-75mm)

**supplied accessories:** 6 pcs of self-tapping screws DIN7516 M4x10

